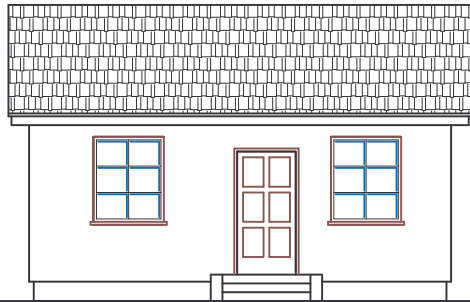
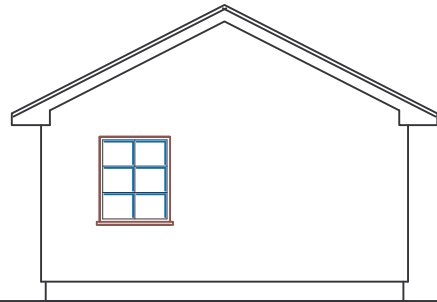


POWIERZCHNIA CAŁKOWITA 45,1m<sup>2</sup>  
POWIERZCHNIA UŻYTKOWA 39,0m<sup>2</sup>

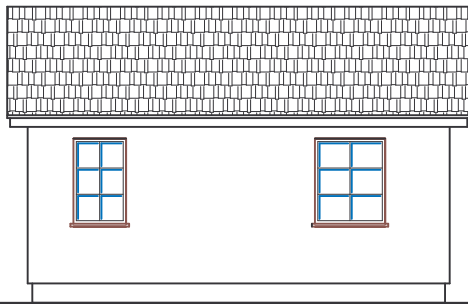
# STUDENT HAUS — 1



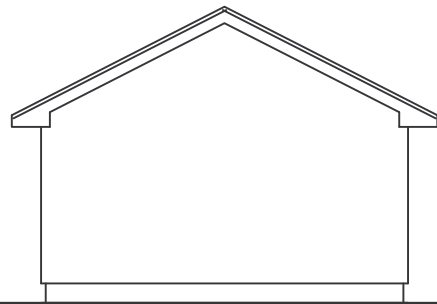
e l e w a c j a   f r o n t o w a



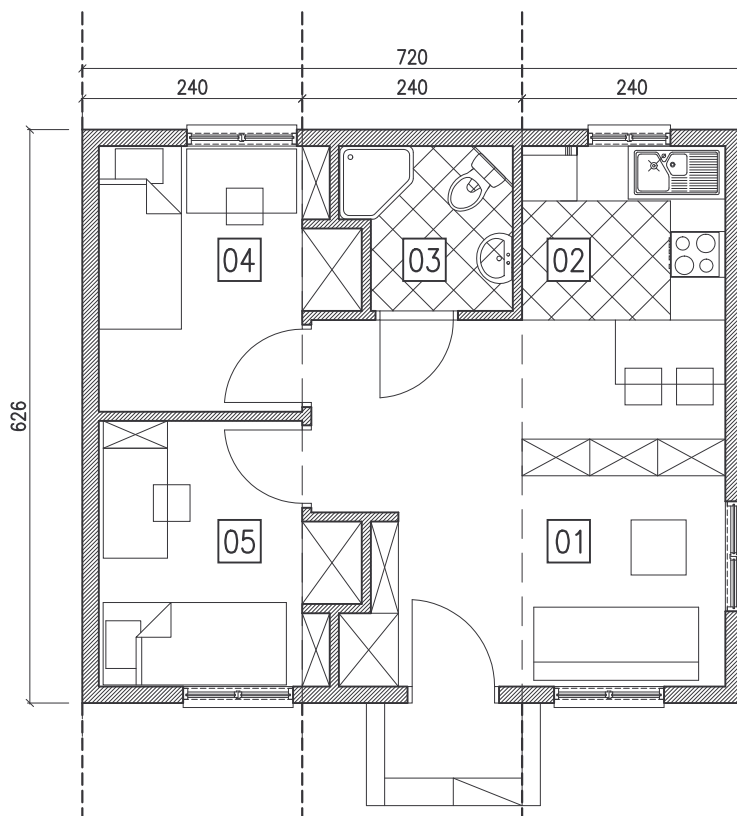
e l .   b o c z n a



e l e w a c j a   o g r o d o w a



e l .   b o c z n a



01	cz. dzienna	17,1m <sup>2</sup>
02	aneks kuchenny	4,2m <sup>2</sup>
03	łazienka	3,1m <sup>2</sup>
04	pokój 1	7,3m <sup>2</sup>
05	pokój 2	7,3m <sup>2</sup>
	razem	39,0m <sup>2</sup>